



DiabeCHECK[®]

SAFETY BLOOD LANCETS

DC-303SL



Safe

- Needle fully shielded before and after use
- Sterilised by gamma irradiation

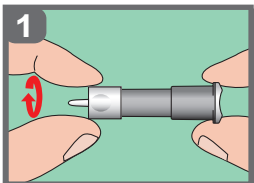
Comfortable

- High quality tri-bevel needle
- High speed penetration
- Tri-level ground tip keeps good blood flow

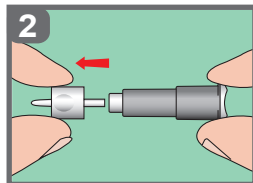
Easy to use

- Pre-loaded and pressure-activated
- No lancing device required
- Simple activation by single push

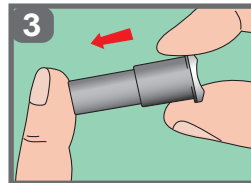
INSTRUCTIONS FOR USE



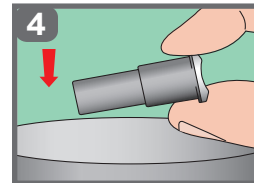
Rotate the twisting cap less than half a round



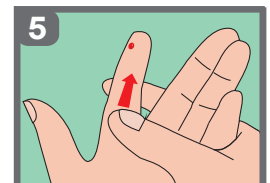
Pull out the twisting cap



Place the device on the puncture site and push to start



Discard lancet into a sharps container



Press lightly on the finger towards the puncture site to obtain an adequate blood sample

PRODUCT FAMILY

| SAFETY LANCET | PART NUMBER | BLOOD FLOW |
|---------------|----------------------|------------|
| | DC-303SL (30G/1.8mm) | |
| | DC-303SL (28G/1.8mm) | |
| | DC-303SL (23G/1.8mm) | |
| | DC-303SL (21G/1.8mm) | |
| | DC-303SL (21G/2.2mm) | |
| | DC-303SL (21G/2.4mm) | |

Authorised Distributor: